

2/4/2022

Afforestation Project Report

Project Site - Wadachiwadi, Undri Pune



Implemented By – TERRE Policy Centre
Supported By- Cummins India Ltd.



Technology, Education, Research and Rehabilitation for the Environment
Leading platform for development through Alternate Path

Contents

Introduction	2
Tree Plantation	2
Project Site Location & Map.....	2
Plantation Details	3
List of Species planted at Site	3
Available Water Sources at site.....	4
Images of plantation Process.....	4
Grass Cutting & Pits Digging.....	4
Plants Procurement at Site.....	6
After Plantation	7



Technology, Education, Research and Rehabilitation for the Environment
Leading platform for development through Alternate Path

Tree Plantation

Introduction

MOEF&CC, Government of India have issued guidelines for participation of private sector through involvement of NGOs and Forest Department in a forestation/rehabilitation of degraded forests with their letter dated 7th June 1999. Forest and Revenue Dept. Govt. of Maharashtra vide Govt. Resolution dated 23rd Sept.2011 have issued detailed guidelines in this regard to encourage the greater participation of NGOs in the scheme. These guidelines and the rate structure sanctioned by the Planning Dept. under the MREGS scheme is the basis of preparation of the Plantation Model for the proposal prepared under the said scheme.

Tree Plantation

Tree-planting is the process of transplanting tree seedlings, generally for forestry, land reclamation, or landscaping purpose. TERRE Policy Centre and its other CSR partners are working together towards a greener and better environment of Pune city since 2014 under the expert guidance of Dr. Vinitaa Apte – Founder & Director of TERRE Policy Centre. TERRE's mission is to provide credible information, straight answers and innovative solutions in the effort to address global environmental issues like Climate Change, Ozone Layer Protection, Toxic Chemicals and Biodiversity.

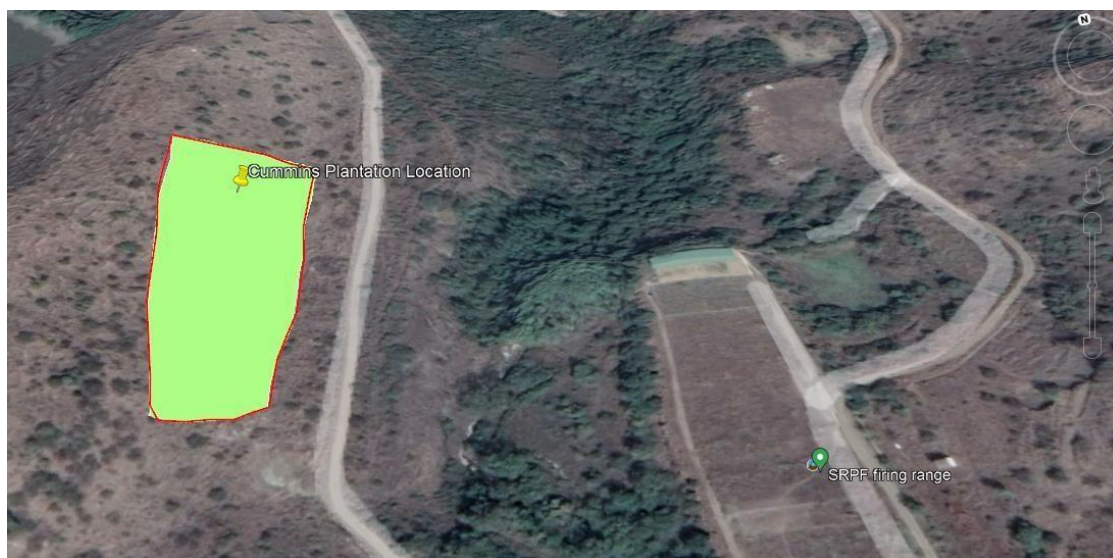
Planting more trees helps to maintain healthy soil and humidity levels in the air around the world. It begins when trees regulate the water cycle. Trees absorb air and transpire it back into the atmosphere, effectively filtering and controlling the levels of humidity wherever they are.

Project Site Location & Map-

Coordinates [18.4175155, 73.9161776](#)

Google Map

<https://www.google.com/maps/place/SRPF+firing+range/@18.4175155,73.9161776,933m/data=!3m1!1e3!4m10!1m3!2m2!1swadachiwadi+fire+range+!6e1!3m5!1s0x3bc2ebbd86b3b99:0x20e197e0fd309ebc!8m2!3d18.4162863!4d73.9182697!15sChZ3YWRhY2hpd2FkaSBmaXJlIHJhbmdlkgEOc2hvb3Rpbmduc2FuZ2U!5m1!1e4>



Plantation Details-

Plantation of total 1000 plants has been done on selected project site. Plants of size 10-12 feet height with bag size of 15*16 inches are planted in 60*60*60cm pits at SRPF Firing range, Wadachiwadi. Total plantation process, initially from site survey, permissions, pits digging & Preparation, plants receipt at site & actual plantation was completed in period of 7th January to 02nd February 2022. Indigenous Plants Species such as *Millettia pinnata* – Karanj, *Bauhinia variegata* – Kanchan, *Neolamarckia cadamba* – Kadamba, *Terminalia arjuna* – Arjuna, *Swietenia* – Mahogany, *Artocarpus heterophyllus* – Jackfruit, *Senna siamea* – Kashid are planted.

List of Species planted at Site-

List of Species Planted @ Wadachiwadi		
Sr. no	Scientific Name - Common Name	Bag Size
1	<i>Millettia pinnata</i> - Karanj	15*16
2	<i>Bauhinia variegata</i> - Kanchan	15*16
3	<i>Neolamarckia cadamba</i> - Kadamba	15*16
4	<i>Terminalia arjuna</i> - Arjuna	15*16
5	<i>Swietenia</i> - Mahogany	15*16
6	<i>Artocarpus heterophyllus</i> - Jackfruit	15*16
7	<i>Senna siamea</i> - Kashid	15*16

Available Water Sources at site



Images of plantation Process -

Grass Cutting & Pits Digging-





Plants Procurement at Site-



After Plantation-





Technology, Education, Research and Rehabilitation for the Environment
Leading platform for development through Alternate Path

Thank You.....



www.terrepolicycentre.com



+91 9834305125/8999738894



terrepolicycentre@gmail.com