



Technology, Education, Research and Rehabilitation for the Environment
Leading platform for development through Alternate Path

Registration No.:- E5523

PAN No.:- AADTT0637P

Contents

Afforestation Project Report 2022-23	3
Introduction.....	3
Project Site Location & Map	4
Plantation Details	5
Project Activities Timeline	5
List of Species Planted at Site	6
Glimpses of Plantation Activities.....	7



Technology, Education, Research and Rehabilitation for the Environment
Leading platform for development through Alternate Path

Registration No.:- E5523

PAN No.:- AADTT0637P

Afforestation Project Report 2022-23

Introduction-

Tree-planting is the process of transplanting tree seedlings, generally for forestry, land reclamation, or landscaping purpose. **TERRE Policy Centre** and **TATA Motors Ltd.** are working together towards a greener and better environment of Pune city under the expert guidance of Dr. Vinitaa Apte – Founder & Director of TERRE Policy Centre. TERRE's mission is to provide credible information, straight answers and innovative solutions in the effort to address global environmental issues like Climate Change, Ozone Layer Protection, Toxic Chemicals and Biodiversity. Forest are the foremost source for producing oxygen in the environment, they also help to reduce the level of CO₂ From the atmosphere, as we all know that the whole world is facing the problem of global warming and to recover from such a problem planting the trees is become one of the most important aspects nowadays.

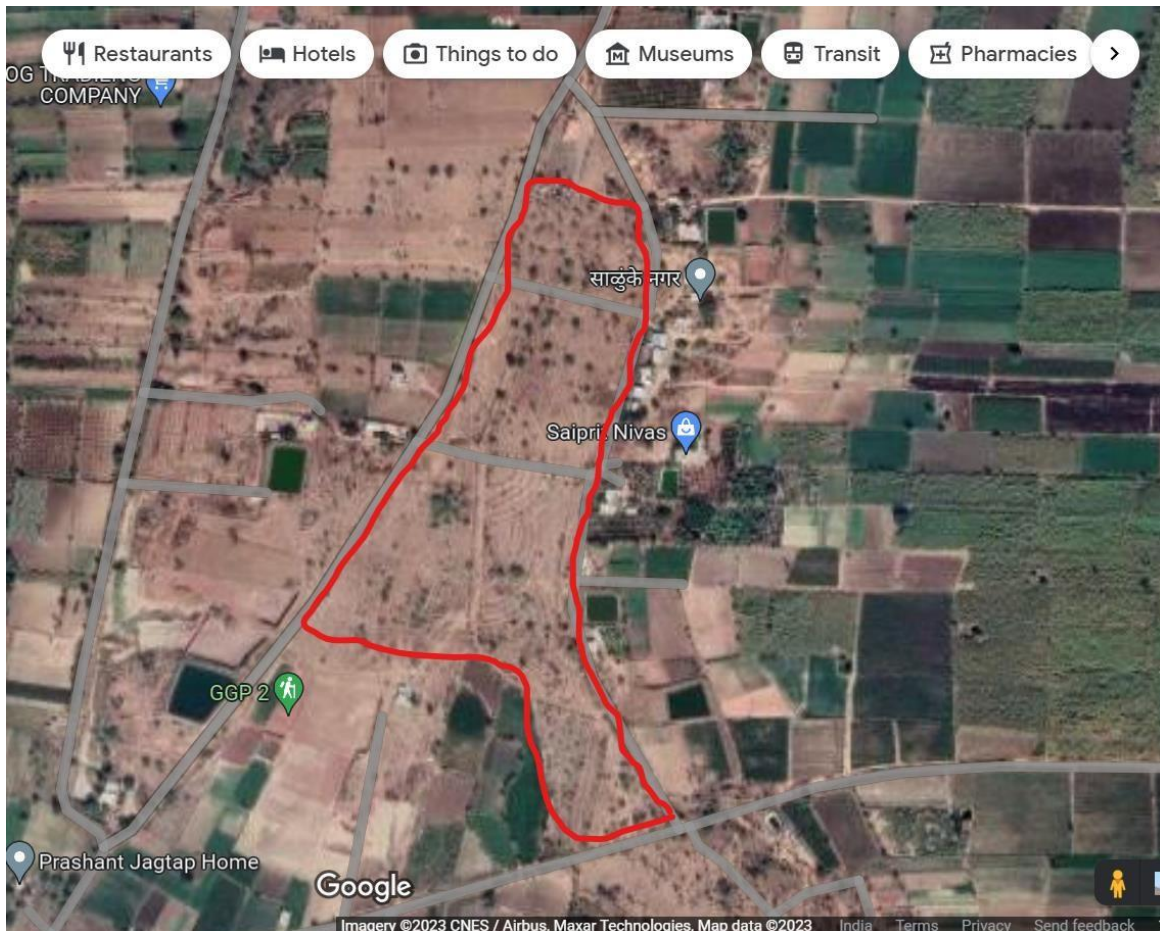
Planting more trees helps to maintain healthy soils and humidity levels in the air around the world. It begins when trees regulate the water cycle. Trees absorb air and transfers back into the atmosphere, effectively filtering and controlling the levels of humidity wherever they are.

As an attempt to reduce environmental issues like Climate Change, Ozone Layer Protection, Toxic Chemicals and Biodiversity **TERRE Policy Centre** & its esteemed CSR partner **TATA Motors Ltd.** initiated afforestation project on the 15th day of July 2022 at Tukai Upwan, Kothale, Village near Jejuri. TATA Motors Ltd. & TERRE Policy Centre is working together for environment & its conservation since past Decade. Till date more than two lakh trees were planted by TERRE on barren land & converted into green oxygen producing zone.

Project Site Location & Map-

Tukai Upwan, Kothale Village, Jejuri (Lat. & Long)

[Click Here](#)



Tukai Upwan Plantation Area highlightd with red colored boundry (Google Image)

Plantation Details-

Plantation of total 16800 plants has been done on 24 acres of land (Workable area). Plants of size 3-4 feet height with bag size of 6*5 inches are planted in 60*60*60cm pits at Kothale site. Total plantation process, initially from site survey, pits digging & Preparation; plants receipt at site, actual plantation was completed in period of June to Nov. 2022. Indigenous Species like Karanj, Tamrind, Amla, Wad, Pimpal etc are planted over the area.

The actual plantation site is availed with appropriate water source, pipe line network all over the site, electricity and security facility.

Total plantation of **17000** native plants is completed from June 2022 to November 2022 by group of local community, some volunteers, villagers etc. By involving manpower from rural area we indirectly empower community by making them available an income source.

Project Activities TimeLine -

Sr.No	Activity	Schedule	Status
1	Site Survey & NOC from Grampanchyat	15 th June to 30 th June 22	Successfully completed
2	Preparation & Pits Digging	June to November	Successfully completed
3	Plants Procurement & unload @ site	July to August	Successfully completed
4	Actual Planation	July to November	Successfully completed

List of Species planted at Site-

Sr.No	Species	Qty.	Sr.No	Species	Qty.
1	Jamun	350	18	Pipal	400
2	Tamarind	1200	19	Anjan	100
3	Mahogany	606	20	Bamboo	1200
4	Neem	815	21	Shirish	300
5	Custard Apple	600	22	Aapta	470
6	Karanj	816	23	Bahawa	20
7	Kanchan	380	24	Mango	200
8	Amla	800	25	Hadga	100
9	Lemon	150	26	Akashneem	201
10	Sweet Lime	200	27	Parijatak	150
11	Raan Bhendi	200	28	Kavat	700
12	Arjun	300	29	Palas	100
13	Waval	100	30	Beheda	525
14	Guava	202	31	Umbar	60
15	Shevga	200	32	Anjir	219
16	Shindi	500	33	Ramfal	86
17	Banyan Tree	250			

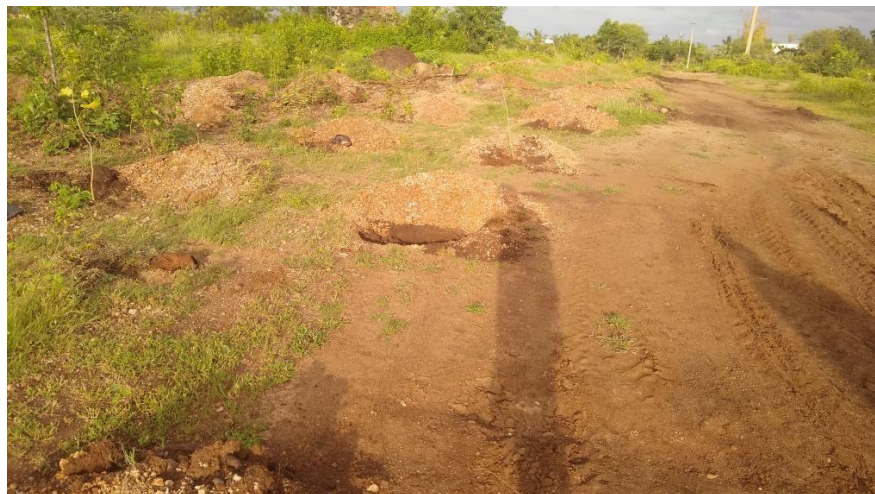
Total -12300 at Kothale Village

Total -4500 at SRPF Daund

Grand Total – 16800, 200 Plants kept for Mortality replacement at Kothale .

Glimpses of Plantation Activity

Site Survey & Pits Digging





Technology, Education, Research and Rehabilitation for the Environment
Leading platform for development through Alternate Path

Registration No.:- E5523

PAN No.:- AADTT0637P

Plantation & Volunteering



Project Site After Plantation





Technology, Education, Research and Rehabilitation for the Environment
Leading platform for development through Alternate Path

Registration No.:- E5523

PAN No.:- AADTT0637P

Thank You.....

Contact Us at-



www.terrepolicycentre.com



+91 9834305125/8999738894



terrepolicycentre@gmail.com